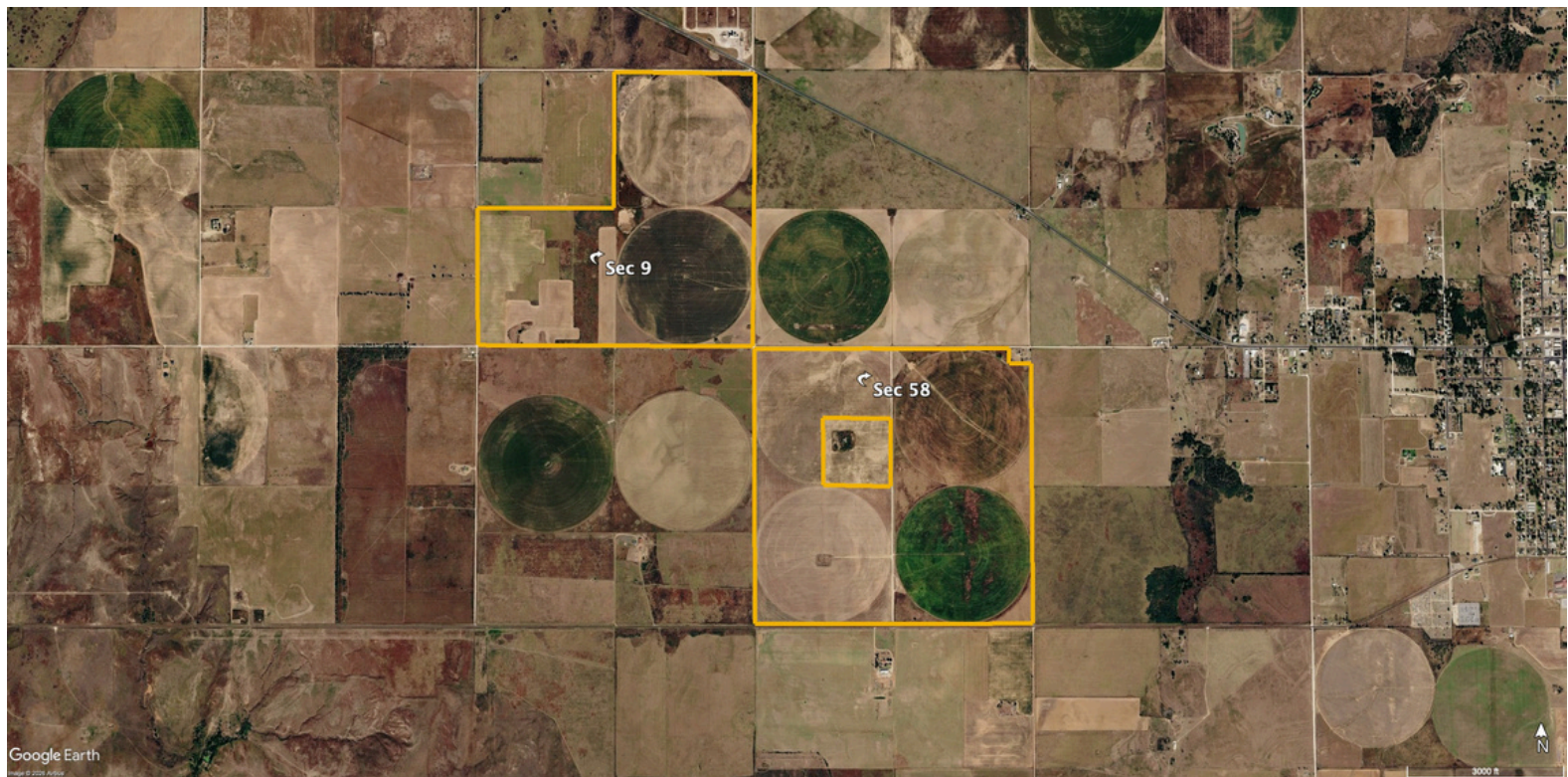
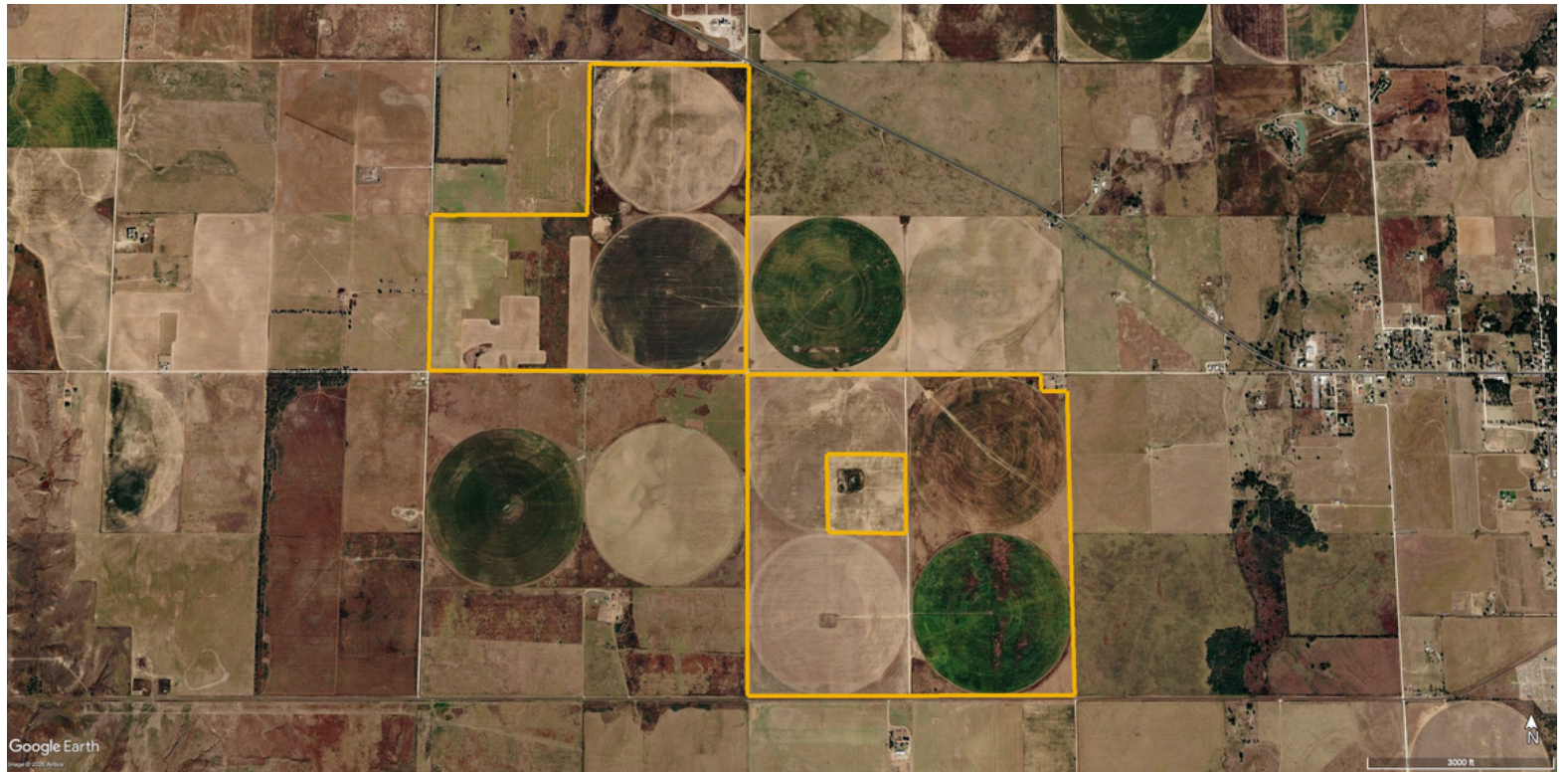


FOR SALE

\$9,000/ acre or \$9,747,000

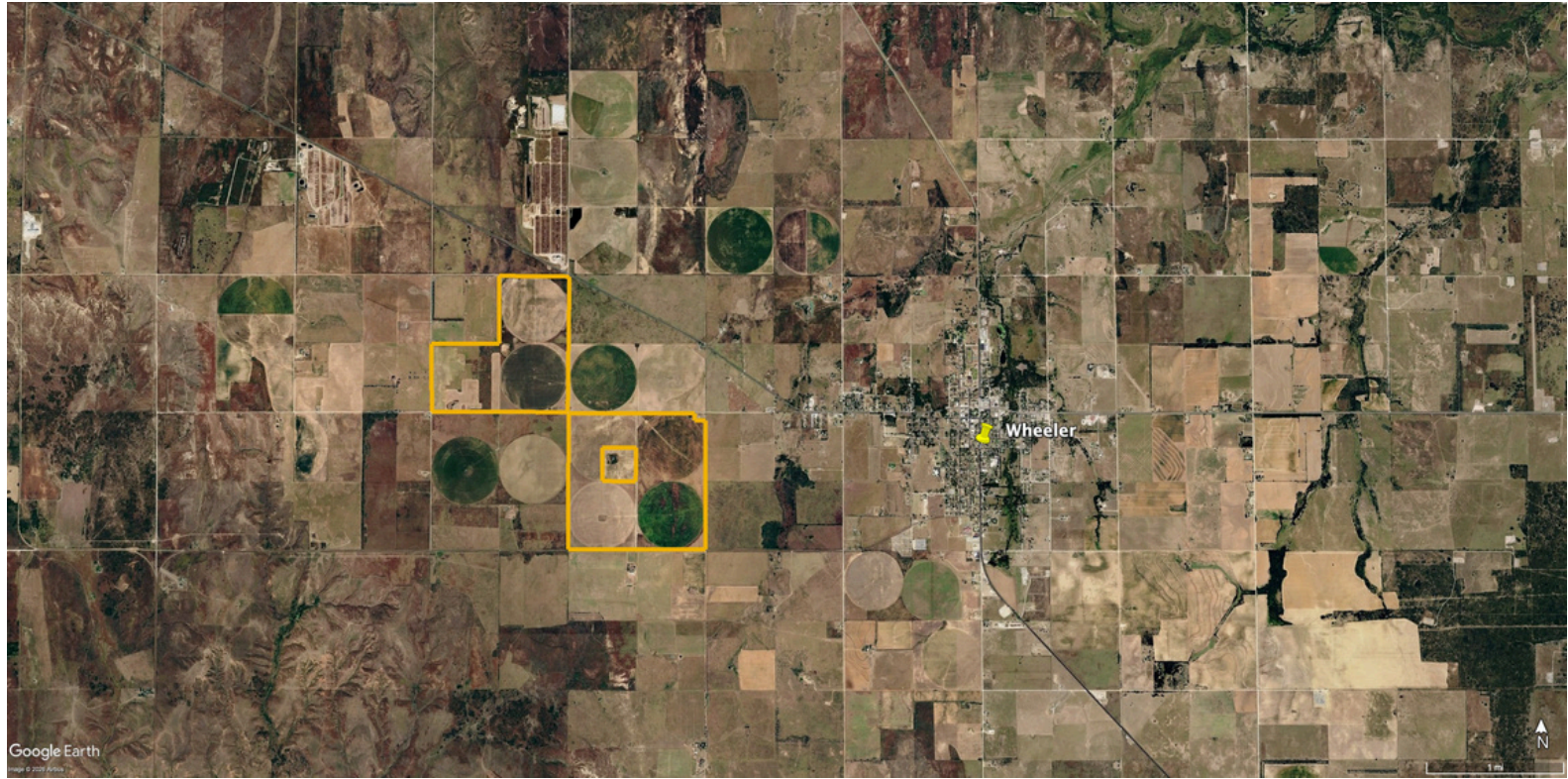
Wheeler Co Irrigated 1083



FOR SALE

\$9,000/ acre or \$9,747,000

Wheeler Co Irrigated 1083



FOR SALE

Wheeler Co Irrigated 1083

\$9,000/ acre or \$9,747,000



FOR SALE

\$9,000/ acre or \$9,747,000

Wheeler Co Irrigated 1083

PROPERTY OVERVIEW

Area: West of Wheeler, TX in Wheeler Co.

Location: From Wheeler, TX drive 1.5 miles west on County Rd L, which comes off of FM 152 as you leave Wheeler going west, to the north boundary of the property.

Access: County Rd L, County Rd 13, County Rd K, County Rd 11

Total Acres: Approximately 1,083 acres

Wet acres: Approximately 690 acres

% Irrigated to total acres: 63.71%

Total Irrigation Wells: 5 irrigation wells

Total GPM: Approximately 1,800 gpm

GPM/ Wet Acre: 2.608 gpm/ wet acre

Power: 3-phase electricity

Improvements: 6- Sprinklers

1- Reinke 2024 model 1/4 mile sprinkler

2- Reinke 2018 models 1/4 mile sprinkler

1- Reinke 2005 model 1/4 mile sprinkler

5- irrigation wells

1- Stockwell

5- Electric Submersible pumps with panels

1- 5 strand barbed wire perimeter fence

Price: \$9,000/ acre or \$9,747,000