

**COMMERCIAL - FARM & RANCH - RESIDENTIAL**



**Gillispie**  
Land Group, LLC

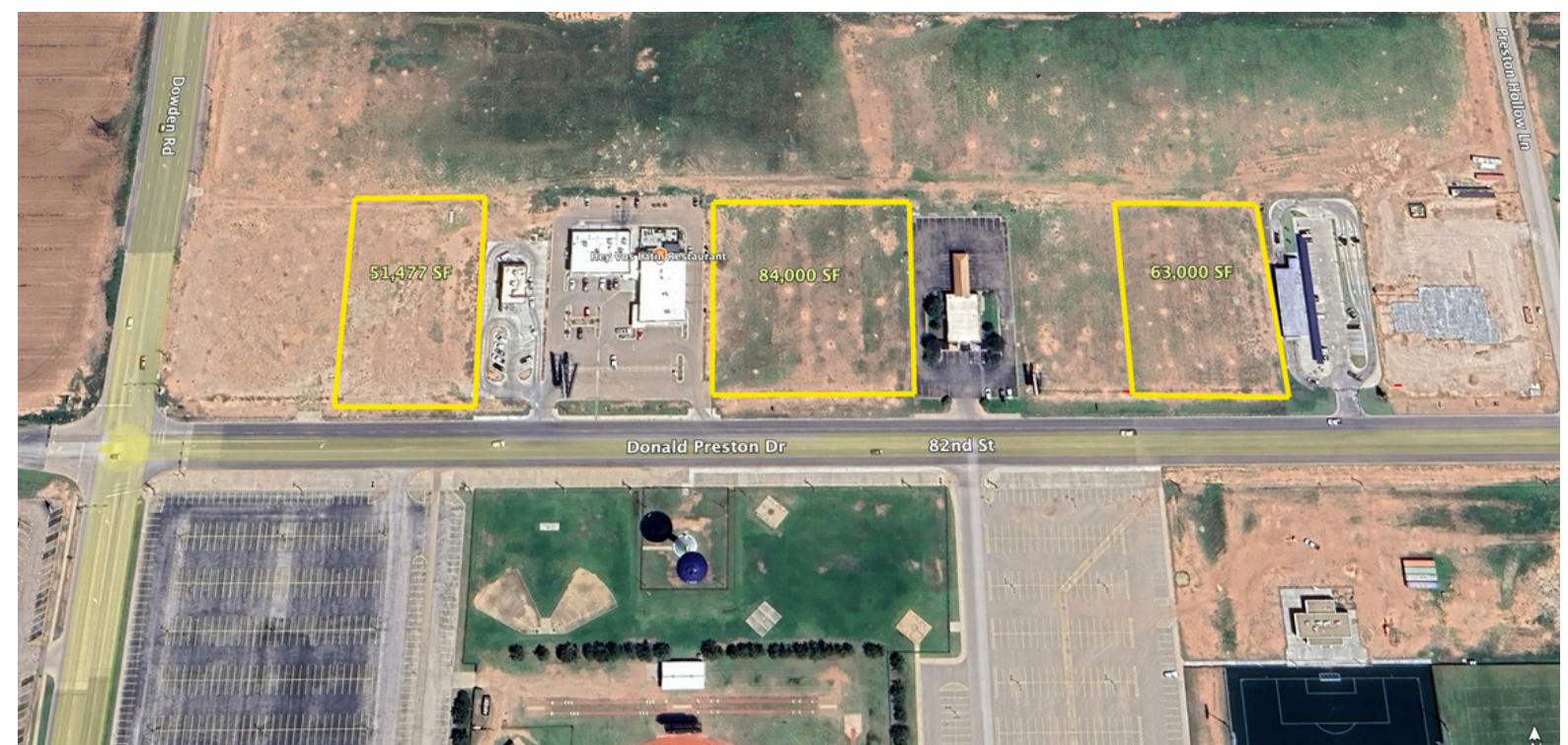
Shawn Gillispie, Broker PH:  
806-922-5532

6107 S Coulter STE #300  
AMARILLO, TEXAS 79119

**FOR SALE**

**WOLFFORTH LOTS**

**\$23/SqFt**





# COMMERCIAL – FARM & RANCH – RESIDENTIAL



## FOR SALE WOLFFORTH LOTS

Shawn Gillispie, Broker PH:  
806-922-5532  
6107 S Coulter STE #300  
AMARILLO, TEXAS 79119

**\$23/SqFt**

LOCATION: LOCATED ON THE SW FRINGE OF LUBBOCK on Donald Preston Dr. (turns into 82nd St entering Lubbock and US Hwy 62/Marsha Sharp Freeway). Sits across Donald Preston Dr from the 10,000 capacity Friendship High School “Peoples Bank Stadium”. Various year round activities including football, baseball, softball, soccer and track are held in this stadium, which draws large crowds. Frenship High school, Frenship 9th grade campus and Bennett Elementary School also within walking distance.

- FRENSHIP HIGH SCHOOL HAS AN ENROLLMENT of 1,610 students in grades 10-12 and is a UIL classified 6-A athletics school. The Frenship 9th grade campus sits across the street from the high school and beside the football stadium is an 88,000 SF building housing a freshman enrollment of over 662 students. Bennet Elementary has an enrollment of 626 students.

LOT DIMENSIONS: 299’ Long x 69’ 11” Wide

BEST USE: Retail

### CITY OF WOLFFORTH, TEXAS



TOTAL RETAIL  
POPULATION

**39,776**



AVERAGE  
HOUSEHOLD INCOME

**\$89,169**



TOTAL  
STUDENT ENROLLMENT

**3,383**

### DONDALD PRESTON DR. TRAFFIC COUNT



CARS  
PER WEEK

**65,000**