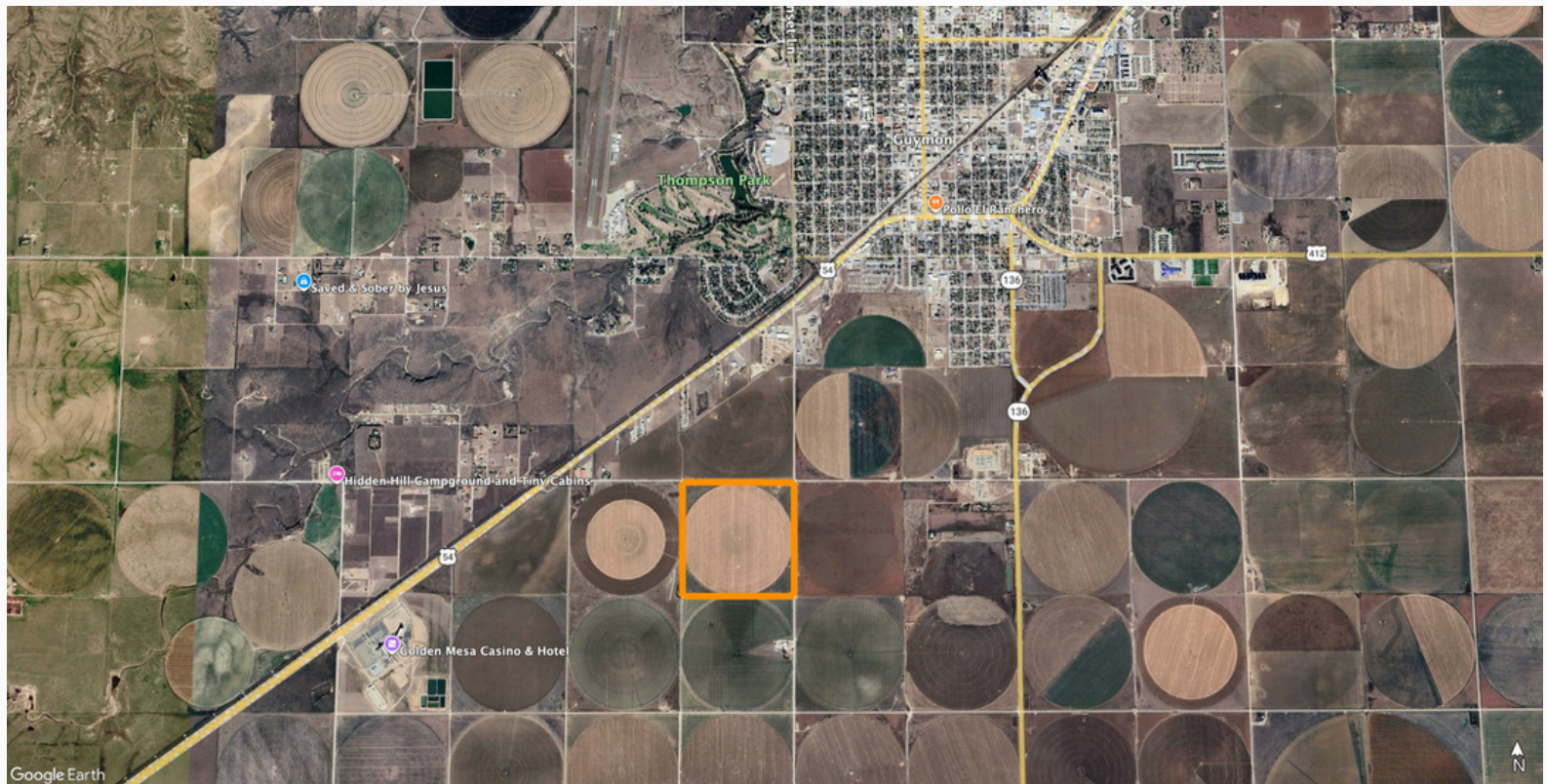
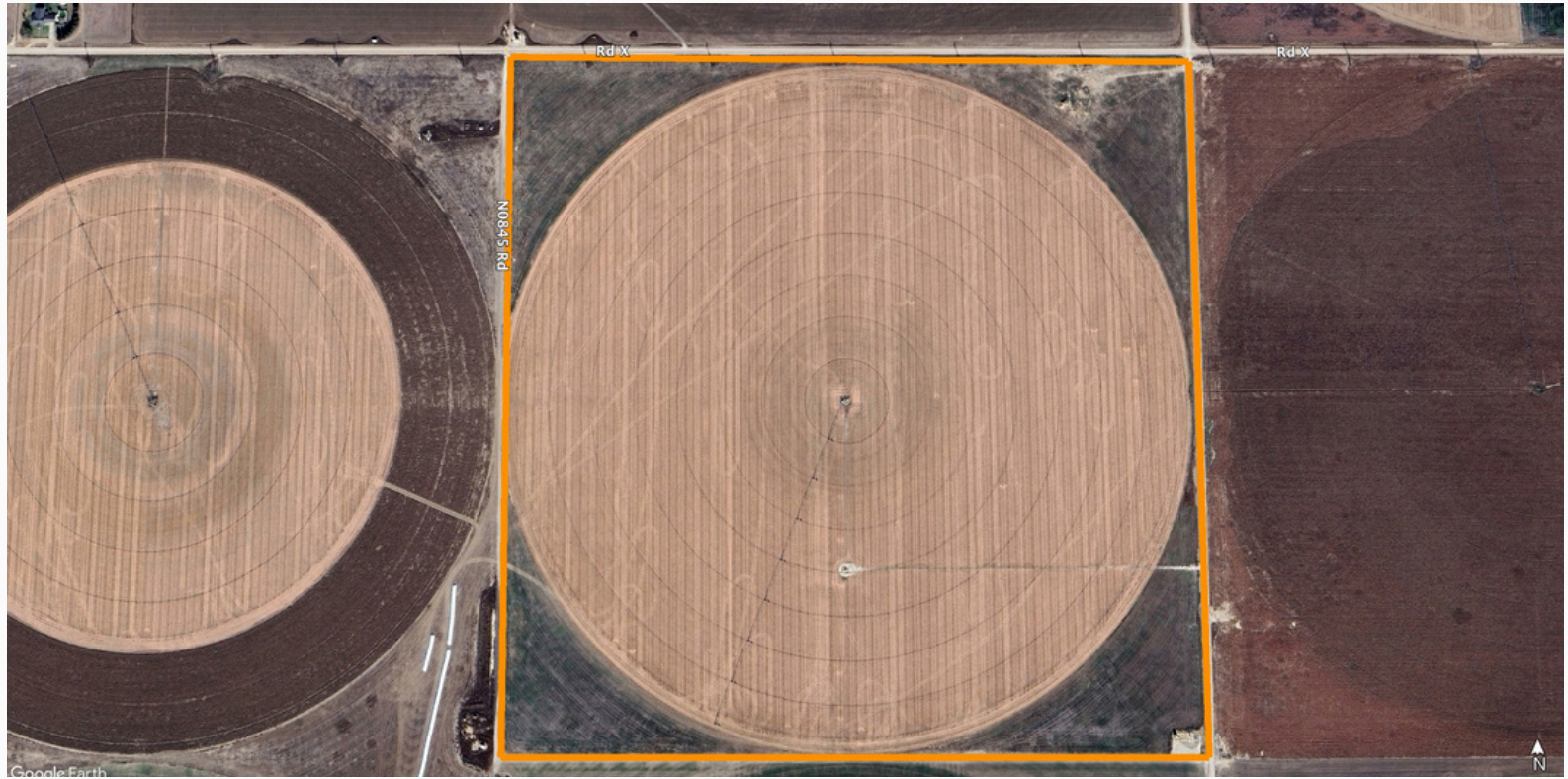


FOR SALE
GUYMON 160

\$560,000 or \$3,500/Acre



FOR SALE
GUYMON 160

\$560,000 or \$3,500/Acre



FOR SALE
GUYMON 160

\$560,000 or \$3,500/Acre

PROPERTY OVERVIEW

Area: SE of Texhoma, OK in Sherman Co.

Location: From Texhoma, OK drive east on Highway 95 for 1.5 miles to FM 1290. Turn right on FM 1290 and drive south 1 mile to the NE corner

corner of the property.

Access: FM 1290 paved highway.

Total Acres: Approximately 656 acres

Wet acres: Approximately 440 acres

% Irrigated to total acres: 67.07%

Total Irrigation Wells: 4 irrigation wells

Total GPM: Approximately 1,900 gpm

GPM/ Wet Acre: 4.31 gpm/ wet acre

Power: Natural gas, single phase electricity

Improvements:

4- irrigation wells

4- turbine pumps with gearheads

4 Chevy engines- 1- 350, 1- 454, 1- 496, 1- 8.0 liter Chevy engine

3- Zimmatic 1/4 mile sprinklers- Models 1- 2022, 1- 2019, 1- 1986

1- Lockwood 80-acre sprinkler- Model 1985 with 2025 Valley panel

Price: \$5,900/ acre or \$3,870,400